



G3 Extra System Process Chart

For Medium Solids Paint Systems

Remove Defect

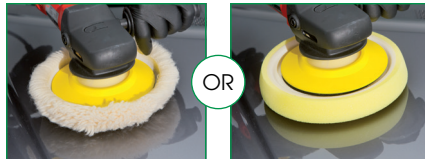
Wet Use Sanding

G Sand Denibbing	GSD320
Rose P2000	
G Sand Denibbing Block	GSA301
G Sand Waterproof Half Sheets P1500	GSW115
G Sand Waterproof Half Sheets P2000	GSW120
G Sand Flattening Block	GSA012

Dry Use Sanding

G Sand 75mm Abrasive Film Discs P1200	GSD712
G Sand 75mm Abrasive Film Discs P1500	GSD715
G Sand 75mm Abrasive Film Discs P2000	GSD720
G Sand 75mm Abrasive Foam Discs P3000	GS3701
G Sand 150mm Abrasive Film Discs P1200	GSD112
G Sand 150mm Abrasive Film Discs P1500	GSD115
G Sand 150mm Abrasive Film Discs P2000	GSD120
G Sand 150mm Abrasive Foam Discs P3000	GS3101
G Sand 150mm Interface Pad	GSA106

1. Compounding



G3 Extra
Abrasive Compound



Product Size
500g
1kg
1 US gallon

Codes
G3E501
G3E101
G3E118

Applicators

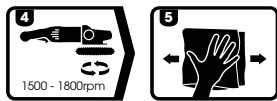
G Mop 8" Twisted Wool Pad - Single Sided	GMW801
G Mop 8" Twisted Wool Pad - Double Sided	GMW806
G Mop 8" Yellow Compounding Foam	GMC812



1 Attach a G Mop 8" Wool Pad to a polishing machine

2 Shake bottle well before use

3 Dispense a small quantity of product onto surface or pad



4 Compound at 1500 - 1800rpm

5 Wipe clean with a Finishing Cloth **FC-3** (3 x cloths)

2. Finishing



G3 Fine
Finishing Compound



Product Size
500g
1kg
1 US gallon

Codes
G3F501
G3F101
G3F118

Applicators

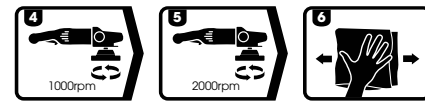
G Mop 3" Finishing Foam	GMF301
G Mop 6" Finishing Foam	GMF601
G Mop 8" Finishing Foam	GMF801



1 Attach a G Mop Finishing Foam to a polishing machine

2 Shake bottle well before use

3 Dispense a small quantity of product onto surface or pad

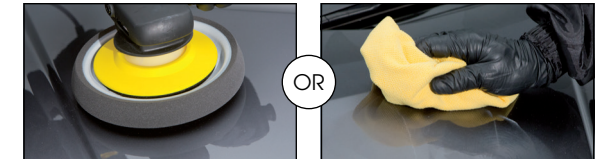


4 Spread and start compounding at 1000rpm

5 Slowly increase speed to 2000rpm. **DO NOT ALLOW PRODUCT TO DRY**

6 Wipe clean with a Finishing Cloth **FC-3** (3 x cloths)

3. Protecting



G3 Glaze
Gloss Enhancer



Product Size
500ml
1ltr
1 US gallon

Codes
G3G501
G3G101
G3G118

G3 Wax
Premium Liquid Protection



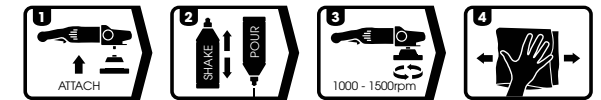
Product Size
500ml
1ltr
1 US gallon

Codes
G3W501
G3W106
G3W118

Applicators for both products

G Mop 3" Finishing Foam	GMF301
G Mop 6" Finishing Foam	GMF601
G Mop 8" Finishing Foam	GMF801
Finishing Cloth (3 x cloths)	FC-3

G3 Glaze - Primary Application by machine



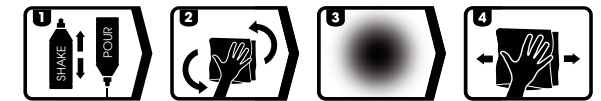
1 Attach a G Mop Finishing Foam to a machine

2 Shake bottle well and apply a small quantity to pad or surface

3 Compound at 1000 - 1500rpm

4 Wipe clean with a Finishing Cloth **FC-3** (3 x cloths)

G3 Wax - Primary Application by hand



1 Shake bottle well and apply a small quantity to the surface

2 Rub the product in a circular motion onto the surface with a cloth

3 Allow to dry to a haze

4 Wipe clean with a Finishing Cloth **FC-3** (3 x cloths)